

Four heads welding machine

GHIBLI S4



Welding machine with four heads for PVC profiles welding till maximum height 120 mm.
Quick counterences changing.
Burr limiting knives adjustable between 0,2 (for wood-like profiles) and 2 mm (for white profile).
The temperature can be adjusted between 0-350 ° C with an electronic thermostat.
Used to weld four corners of PVC profiles at 90° at the same time.
The machine is equipped with a 12" touchscreen panel able to control a 3 axes brushless system.
Equipped with teflon resistance wrapping system

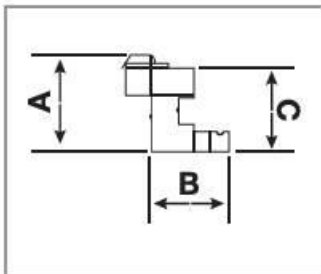
240 frames / 8 hours

Frame dimensions

Min : 400 x 400

Max : 3500 x 2600

Profile dimensions



a Max : 120 mm

a Min : 30 mm

b Max : 120 mm